

# Texture Guide

**3** Wavy



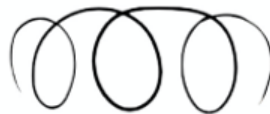
Loose open wave. The open curve is roughly the size of a standard sidewalk chalk.

**4** Curly



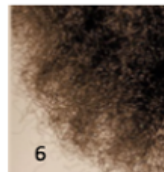
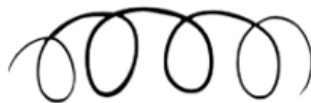
Loose open curl. The curve of the open curl is roughly the size of a standard large sharpie marker.

**5** Very Curly



Round full curl. The curve of the round curl is roughly the size of a standard large sharpie pen.

**6** Coiled



Full round coil. The curve of the coil is roughly the size of a standard pencil.

**7** Very Coiled



Tight round coil. The curve of the coil is roughly the size of a standard Kebob skewer.

**8** Zig-Zag Coiled



Tight zigzag coil. The curve of the coil is roughly the size of a standard toothpick.